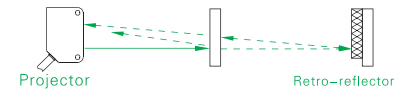


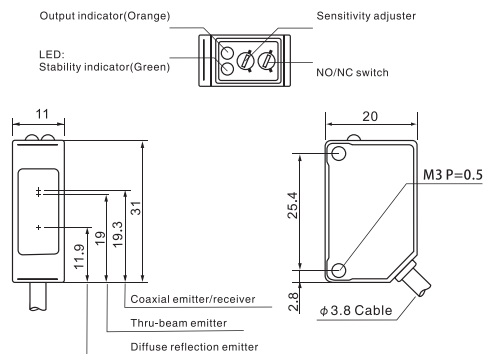
EST Series



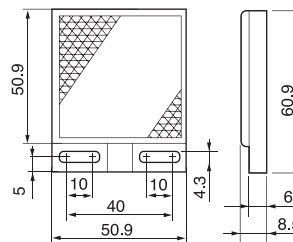
Appearance		
Sensing type	Retro-reflection	
Sensing distance	General Type 1~200cm	Coaxial beam 0~200cm
Beam size	φ 300mm/200cm	φ 60mm/200cm
Output type	NPN/PNP Open-collector, ≤100mA/30V DC	
Switch type	Selectable L.on/D.on	
Indicator	Motion indicator: Green; Output indicator: Orange	Output indicator: Orange
Response time	0.5 ms	
Light source	Red light LED(66nm)	
Operating voltage	10~30V DC ± 10%	
Current consumption	< 20mA	
Ambient brightness	Sunlight ≤ 10000Lux, Incandescent lamp ≤ 3000Lux	
Ambient temperature	-25°C~+55°C, No freezing	
Ambient humidity	35%~85%RH, No condensation	
Degree of protection	IP67	
Connection method	2M 3 core cable	
Material	PBT+Fiberglass (Housing); PMMA(Lens)	
Accessories	Bracket	
Model No.	NPN EST-200N PNP EST-200P	EST-X200N HOT EST-X200P

Dimensions

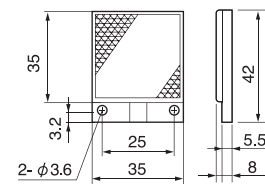
Unit: mm



EST-200 Reflector:



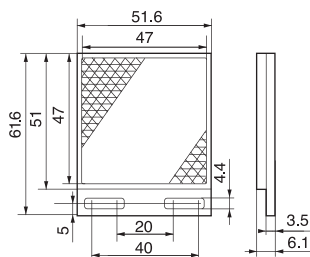
(Standard TD-11)



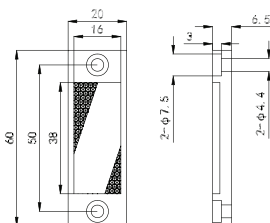
(Optional TD-12)

Noted:
Coaxial products only have one orange LED output indicator.

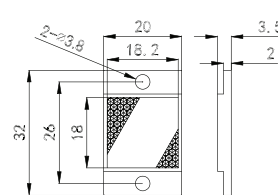
EST-X200 Reflector:



(Standard TD-13)

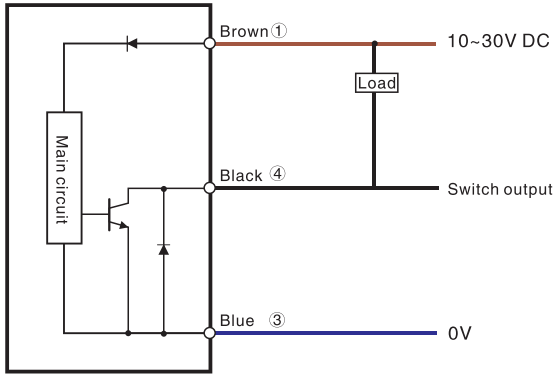


(Optional TD-14)



(Optional TD-15)

NPN Output



PNP Output

