

Mini-square

Pre-wired

| | | | | | |
|--------------------------|-------------------------|----------------------------------|------------------------------------|--|--|
| Appearance | | | | | |
| Mounting | Unshielded | Unshielded | Unshielded | Unshielded | |
| Housing size | E06 | E07 | E08 | E09 | |
| Sensing distance | 1mm ± 15% | 1mm ± 15% | 2.5mm ± 10% | 2.5mm ± 10% | |
| Housing material | Plastic | | | | |
| Operating voltage | 10~30V DC(Ripple < 10%) | | | | |
| Voltage drop | < 1.5V | | | | |
| Load Current , Max | 100mA | | 150mA | | |
| Current consumption | < 10mA | | | | |
| Leakage current | < 0.01mA | | | | |
| Switch frequency | 500Hz | | 800Hz | | |
| Repeat accuracy | < 5% (Sr) | | < 1% (Sr) | | |
| Hysteresis | < 15% (Sr) | | | | |
| Sensing surface material | PC | | | | |
| Operating Temperature | -25°C~+75°C | | | | |
| Protective circuit | - | | Short circuit | | |
| Degree of protection | IP67 | | | | |
| Model No. | NPN Normally open | TEN06-01 ^{NO} | TEN07-01 ^{NO} | TEN08-2.5 ^{NO} ^{HOT} | TEN09-2.5 ^{NO} ^{HOT} |
| | Others | ^{NO} :NPN Normally open | ^{NC} :NPN Normally closed | ^{PO} :PNP Normally open | ^{PC} :PNP Normally closed |

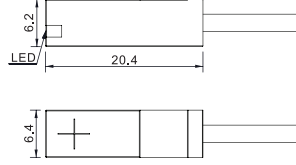
| | | | | | |
|--------------------------|-------------------------|---|------------------------------------|--|--|
| Appearance | | | | | |
| Mounting | Unshielded | Unshielded | Unshielded | Unshielded | |
| Housing size | E10 | E12 | E15 | E16 | |
| Sensing distance | 2.5mm/4mm ± 10% | 4mm ± 10% | 5mm/8mm ± 10% | 5mm/8mm ± 10% | |
| Housing material | Plastic | | | | |
| Operating voltage | 10~30V DC(Ripple < 10%) | | | | |
| Voltage drop | < 1.5V | | | | |
| Load Current, Max | 150mA | | | | |
| Current consumption | < 10mA | | | | |
| Leakage current | < 0.01mA | | | | |
| Switch frequency | 800Hz/200Hz | | 1KHz/500Hz | | |
| Repeat accuracy | < 5% (Sr) | | < 1% (Sr) | | |
| Hysteresis | < 15% (Sr) | | | | |
| Sensing surface material | PC | | | | |
| Operating Temperature | -25°C~+75°C | | | | |
| Protective circuit | Short circuit | | | | |
| Degree of protection | IP67 | | | | |
| Model No. | NPN Normally open | TEN10-2.5 ^{NO} /TEN10-04 ^{NO} | TEN12-04 ^{NO} | TEN15-05 ^{NO} /TEN15-08 ^{NO} | TEN16-05 ^{NO} /TEN16-08 ^{NO} |
| | Others | ^{NO} :NPN Normally open | ^{NC} :NPN Normally closed | ^{PO} :PNP Normally open | ^{PC} :PNP Normally closed |

Mini-square

Dimensions (Unit:mm)

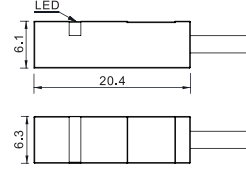
E06

TEN06-01□□



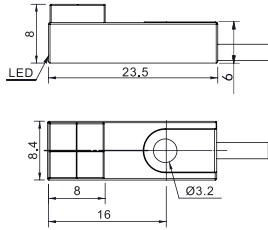
E07

TEN07-01□□



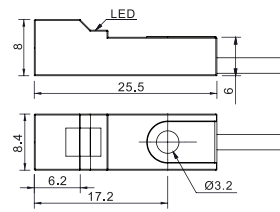
E08

TEN08-2.5/03□□



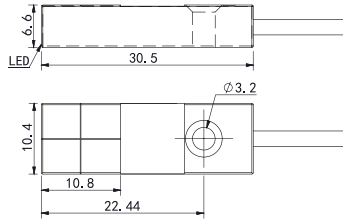
E09

TEN09-2.5/03□□



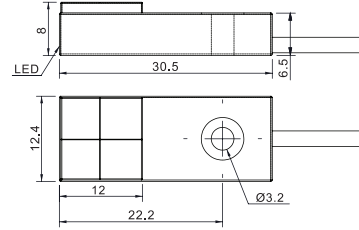
E10

TEN10-2.5/04□□



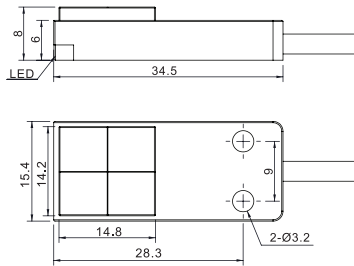
E12

TEN12-04□□



E15

TEN15-05/08□□



E16

TEN16-05/08□□

